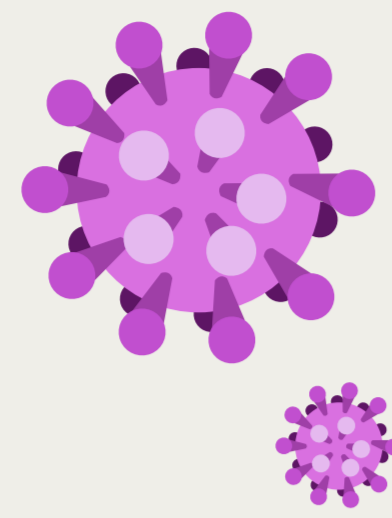
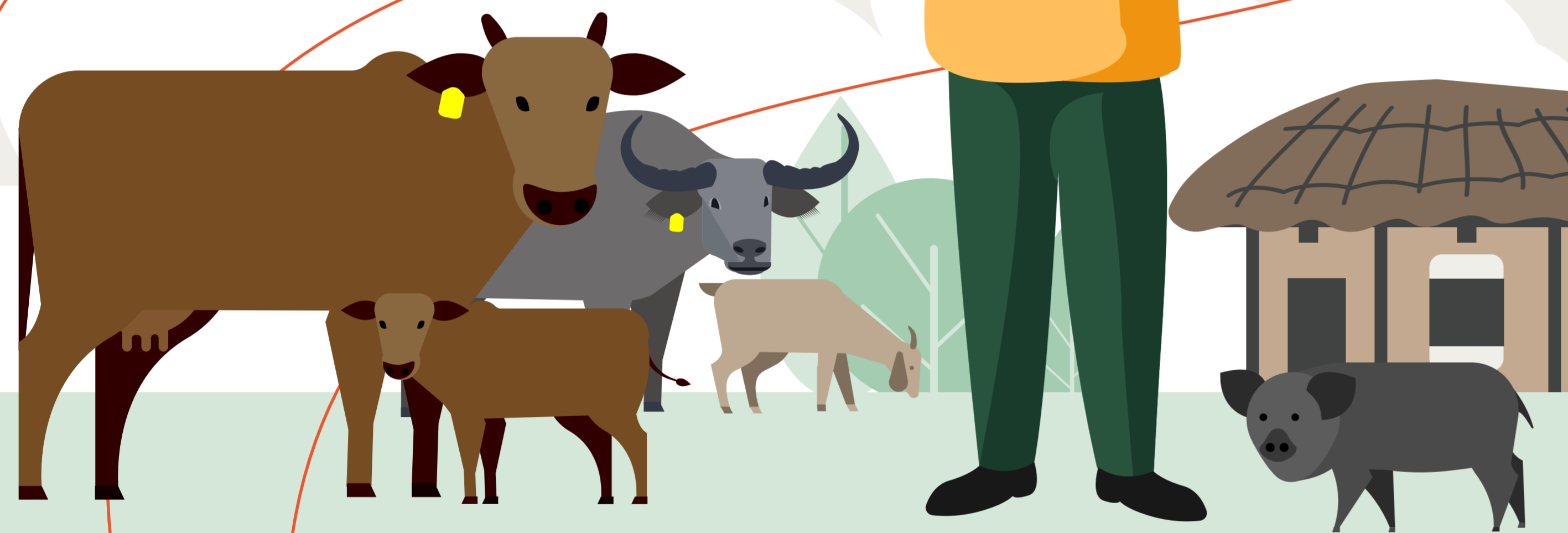


FOOT AND MOUTH DISEASE



How to recognise the disease in your cattle or other farm animals



What is foot and mouth disease (FMD)?

Foot and mouth disease is a highly contagious, viral disease which can spread rapidly from one animal to another.

Although it is rarely fatal in adult animals, it causes serious production losses and is a major constraint on international trade. FMD is not readily transmissible to humans and is not a public health risk.

Who is affected by FMD?

All domestic cloven-hoofed animals are susceptible, including cattle, swine (pigs), sheep and goats.

FOOT AND MOUTH DISEASE

What are the signs and symptoms of FMD?

CATTLE



High fever & shivering



Salivation & drooling



Loss of appetite



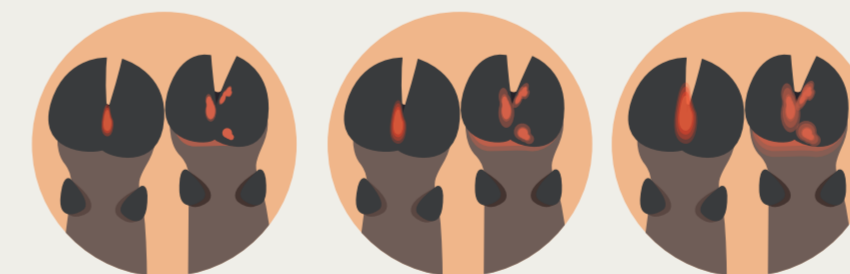
Lameness



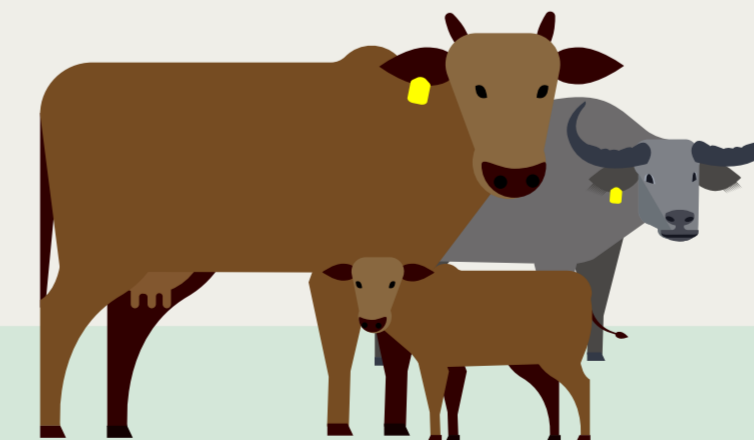
Loss of weight



Decreased milk production



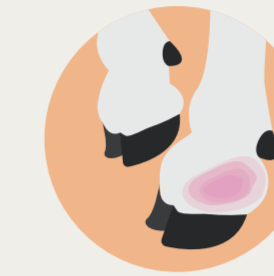
Mild to severe vesicles & lesions



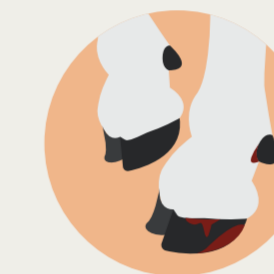
SHEEP & GOATS



Fever



Lameness



Vesicles on the feet



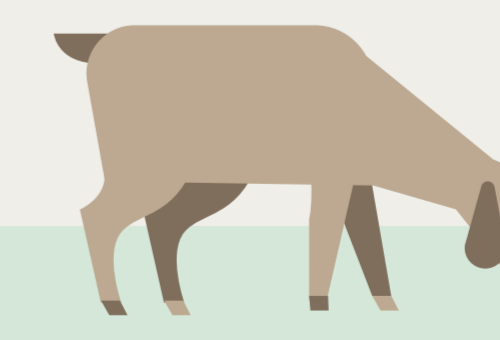
Mouth lesions
(are often not noticeable or shallow erosion)



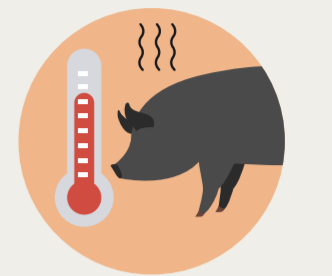
Absence of milk production



Abortion in ewes and / or death of newborns



SWINE (PIGS)



Fever



Lameness



Claw detachment



Limb vesicles



Lesions
(Dry lesions on snout; on tongue, vesicular lesions)



High mortality in piglets

